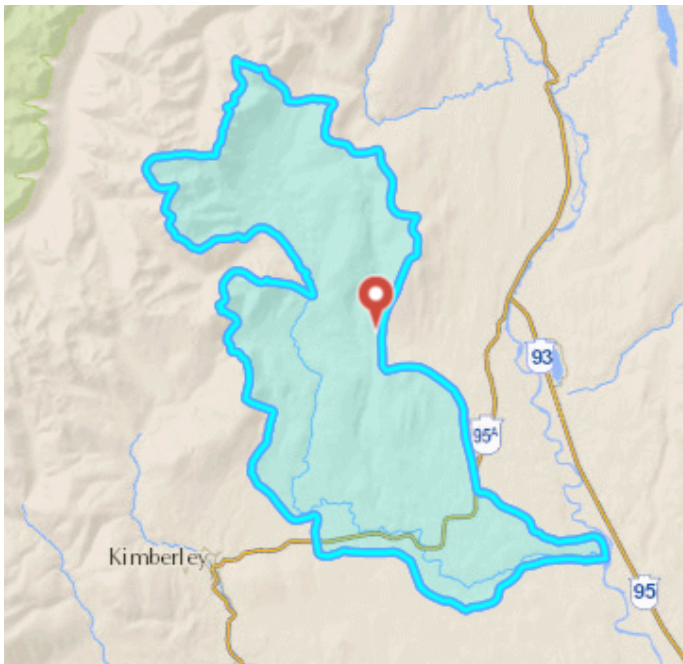


WHAT IS A WATERSHED?



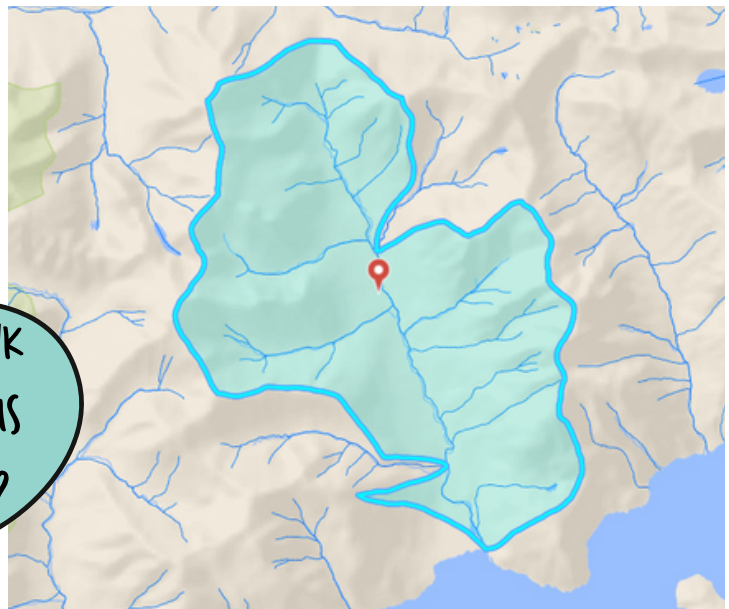
WE ALL KNOW THAT WATER FLOWS. IT FLOWS FROM HIGH PLACES TO LOW PLACES.

1. This is a map of the watershed for Mather creek in the Kootenay region of BC. Mather creek is one of many creeks and streams that flows into the Kootenay river. This watershed is **246 square kilometers in area**



A WATERSHED IS AN AREA OF LAND IN WHICH

ALL THE WATER THAT FLOWS OVER THE SURFACE OF THE GROUND ENDS UP COLLECTING IN A PARTICULAR RIVER OR STREAM.



WHY DO YOU THINK RIVERS & STREAMS CHANGE IN SIZE?



2. This is a map of the McNab Creek Watershed in the Squamish region of BC. McNab creek flows into the Salish sea/ Pacific Ocean. This watershed is **53 square km in area**.